

Corners to be Indexed

NE 14-107-43
 E1/4 14-107-43
 N1/4 14-107-43

STATE OF MINNESOTA, } ss.
 COUNTY OF MURRAY, }

I hereby certify that the within Instrument
 was filed in this office for record on the
5TH day of FEBRUARY A.D. 20 19
 at 9:00 o'clock A. M., and was duly
 recorded as Document No. _____

I hereby certify that this document and the data
 contained herein was prepared by me or under
 my direct supervision

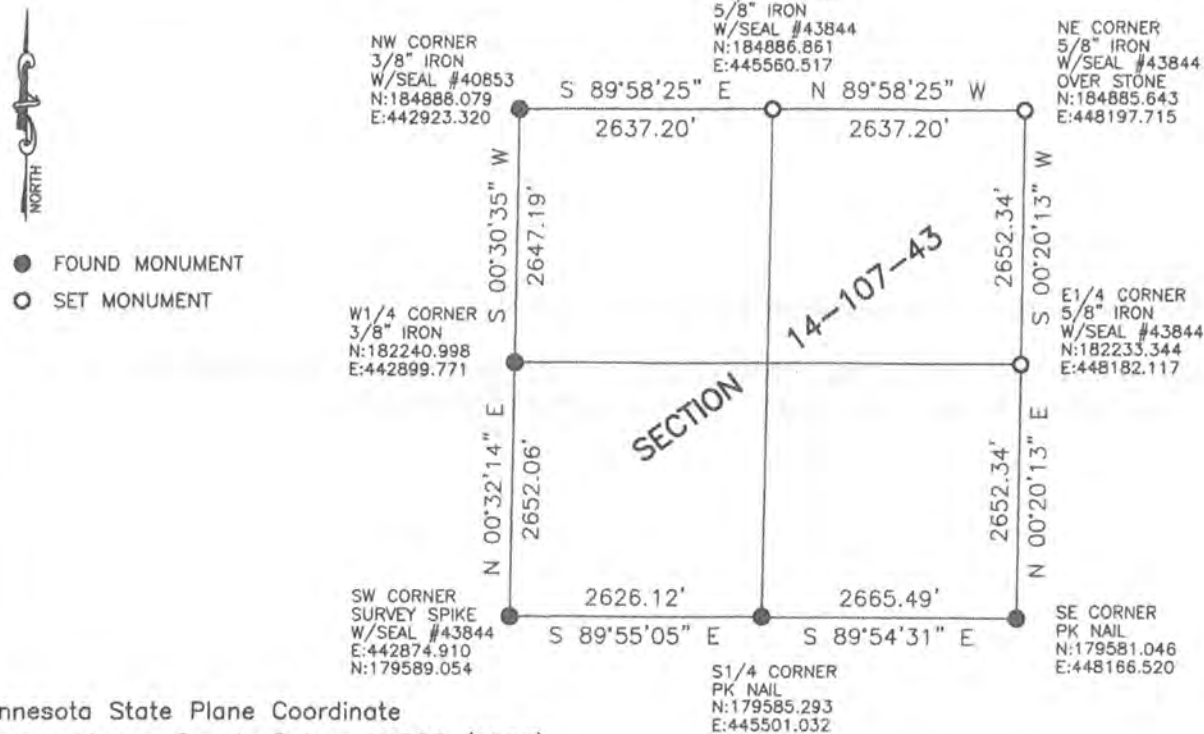
Daniel L. Bueltel
 Daniel L. Bueltel
 License No. 43844
 Date 1/31/2019

Lucy C. Larson
 Lucy C. Larson
 County Recorder

CERTIFICATE OF LOCATION OF GOVERNMENT CORNER

Land survey monuments situated in Section 14, Township 107, Range 43, 5TH P.M.
 STATE OF MINNESOTA, County of MURRAY

STATEMENT OF EVIDENCE:



Minnesota State Plane Coordinate
 System Murray County Datum NAD83 (1996)

Statement of Evidence

NE 14-107-43

In 1866, J.W. Bishop did the original subdivision of the township.

No Date, F.H. March shows a stone at the corner.

On July 26, 2018, Bueltel-Moseng Land Surveying dug with a backhoe and found a 12" pointed field stone. We set a 5/8" iron with seal #43844 on the south side of the stone and a 5/8" iron with seal #43844 over the stone. It is in the center of the north and south road and in the approximate center of the field roads to the east and west.

E1/4 14-107-43

In 1866, J.W. Bishop did the original subdivision of the township.

No Date, F.H. March shows a stone at the corner.

On July 26, 2018, Bueltel-Moseng Land Surveying dug with a backhoe and found nothing. We set a 5/8" iron with seal #43844 midway and online between the section corners. It is in the center of the road and in line with the fences to the east and west.

N1/4 14-107-43

In 1866, J.W. Bishop did the original subdivision of the township.

On July 26, 2018, Bueltel-Moseng Land Surveying set a 5/8" iron with seal #43844 midway and on line between the section corners. It is in the center of the field road.